



# NISSAN NAVARA

ROAD | OFF ROAD | TRACK | LUXURY



Wolftrace Wheels (UK) Limited - 7 Galliford Road Industrial Est - Maldon - Essex - CM9 4XD - United Kingdom  
sales@wolfrace.co.uk | +44 (0) 845 330 9896 | [www.wolfrace.com](http://www.wolfrace.com)



# WOLFRACE EXPLORER / 4X4 / PICK UP CUSTOM ALLOY WHEELS AND WIDE ARCH KITS



**Amazon**  
Gloss Black / Polished  
9x18" 9x20"



**Amazon**  
Gloss Black / Chrome Rivets  
9x20"



**Amazon**  
Matt Black / Black Rivets  
9x18" 9x20"



**Wildtrek**  
Gloss Black / Polished Windows /  
Milled Rim Holes  
9.0x20"



**Wildtrek**  
Matt Black  
9.0x20"



**Kalahari**  
Matt Black  
9x20"



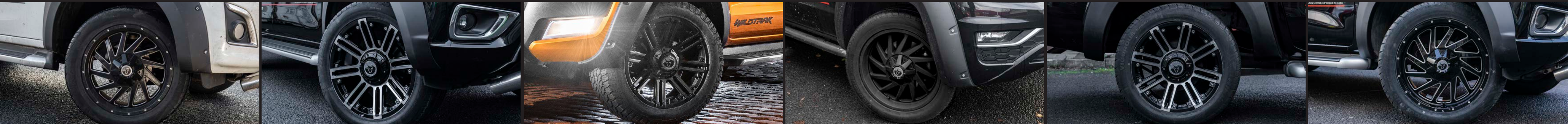
**Kalahari**  
Gloss Black / Polished  
9x20"



**Sahara**  
Gloss Black / Polished  
8.5x17" 9x20"



**Sahara**  
Matt Black  
8.5x17" 9x20"



Wolfrace Explorer wheels are available to fit all 4x4/suv/pick up vehicles with and without an arch kit. Every wheel is custom drilled and machined to fit your vehicle. We can supply wide arch kits for Ford Ranger, VW Amarok, Toyota Hi-Lux, Mercedes X-Class, Nissan Navara, Mitsubishi L200, Fiat Fullback and Isuzu D-Max.



## NAVARA WIDE ARCH KIT

- 4 piece kit
- High strength ABS plastic
- Arches fit to original holes, no drilling required.
- Super quick fitting, arches can be easily removed and standard arch re-fitted.
- Made in Europe.

## WOLFRACE EXPLORER

- Wheels are custom drilled and machined to your vehicle.
- High strength, robust, superior quality alloy wheels.
- High load bearing capacity.
- Adaptable customisation, standard fit to wide track fitting.



### ARCH KIT

Arch kits are tailor made to your vehicle, quick and easy to fit and excellent quality. We can supply wide arch kits for Ford Ranger, VW Amarok, Toyota Hi-Lux, Mercedes X-Class, Nissan Navara, Mitsubishi L200, Fiat Fullback and Isuzu D-Max.



### CHOICE OF TYRE

Choose a high performance road tyre, or an All terrain to get the best of both worlds or an aggressive mud terrain for ultimate off-road performance. We carry a full range of brands, such as General and BF Goodrich to name but 2.



### TPMS WHEN REQUIRED

The act mandated the use of a suitable TPMS technology in all light motor vehicles (under 10,000 pounds), to help alert drivers of under-inflation events. This act affects all light motor vehicles sold after September 1, 2007.