



VOLKSWAGEN AMAROK

ROAD | OFF ROAD | TRACK | LUXURY



Wolfrace Wheels (UK) Limited - 7 Galliford Road Industrial Est - Maldon - Essex - CM9 4XD - United Kingdom
sales@wolfrace.co.uk | +44 (0) 845 330 9896 | www.wolfrace.com

WOLFRACE EXPLORER / 4X4 / PICK UP CUSTOM ALLOY WHEELS AND WIDE ARCH KITS



Amazon
Gloss Black / Polished
9x18" 9x20"



Amazon
Gloss Black / Chrome Rivets
9x20"



Amazon
Matt Black / Black Rivets
9x18" 9x20"



Wildtrek
Gloss Black / Polished Windows /
Milled Rim Holes
9.0x20"



Wildtrek
Matt Black
9.0x20"



Kalahari
Matt Black
9x20"



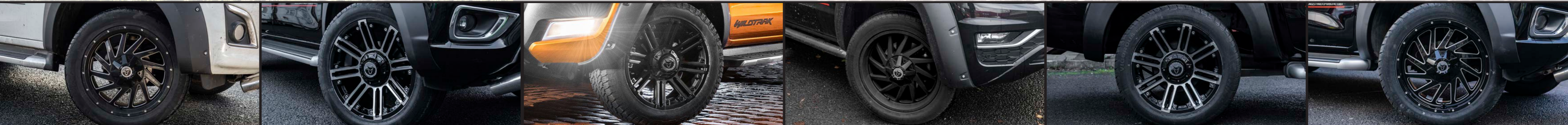
Kalahari
Gloss Black / Polished
9x20"



Sahara
Gloss Black / Polished
8.5x17" 9x20"



Sahara
Matt Black
8.5x17" 9x20"



Wolfrace Explorer wheels are available to fit all 4x4/suv/pick up vehicles with and without an arch kit. Every wheel is custom drilled and machined to fit your vehicle. We can supply wide arch kits for Ford Ranger, VW Amarok, Toyota Hi-Lux, Mercedes X-Class, Nissan Navara, Mitsubishi L200, Fiat Fullback and Isuzu D-Max.

AMAROK WIDE ARCH KIT

- 4 piece kit
- High strength ABS plastic
- Arches fit to original holes, no drilling required.
- Super quick fitting, arches can be easily removed and standard arch re-fitted.
- Made in Europe.

WOLFRACE EXPLORER

- Wheels are custom drilled and machined to your vehicle.
- High strength, robust, superior quality alloy wheels.
- High load bearing capacity.
- Adaptable customisation, standard fit to wide track fitting.



ARCH KIT

Arch kits are tailor made to your vehicle, quick and easy to fit and excellent quality. We can supply wide arch kits for Ford Ranger, VW Amarok, Toyota Hi-Lux, Mercedes X-Class, Nissan Navara, Mitsubishi L200, Fiat Fullback and Isuzu D-Max.



CHOICE OF TYRE

Choose a high performance road tyre, or an All terrain to get the best of both worlds or an aggressive mud terrain for ultimate off-road performance. We carry a full range of brands, such as General and BF Goodrich to name but 2.



TPMS WHEN REQUIRED

The act mandated the use of a suitable TPMS technology in all light motor vehicles (under 10,000 pounds), to help alert drivers of under-inflation events. This act affects all light motor vehicles sold after September 1, 2007.